

**Aymeline Bel (Head of School)**



**Robert Armstrong (DHT)**



**Neeta Singh (DHT)**



**Lucy Capon (DHT and  
Secondary Phase Leader)**



**Jorge Hernando Garijo  
(Acting AHT) Outreach  
and transitions**



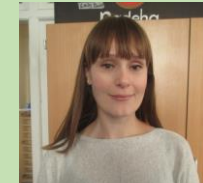
**Reece Morgan (AHT)  
Primary Phase Leader and  
co-teacher**



**Jessica Cameron (AHT)  
Outreach and Co-Teacher**



**Emily Bennet (AHT)  
Assessment and co-Teacher**



**Tessa Harris (ML)  
FPQRB Manager and Class  
Teacher**



**Elise Robinson (ML)  
Creative Arts Manager across the  
Trust and Drama Teacher**



**Olivia Bellhouse (ML)  
EYFS Manager and Class  
Teacher**



**Sinead Martin (AHT)  
Q4 Manager**



**Therapies and Family Support Leadership Team**

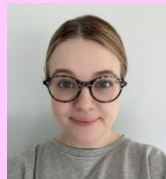
**Caroline Bulmer**

Therapies & family support service  
manager



**Amy-Rose McClean**

Principal Speech and  
Language Therapist



**Eleni Pantopikou**

Family Support Practitioner

